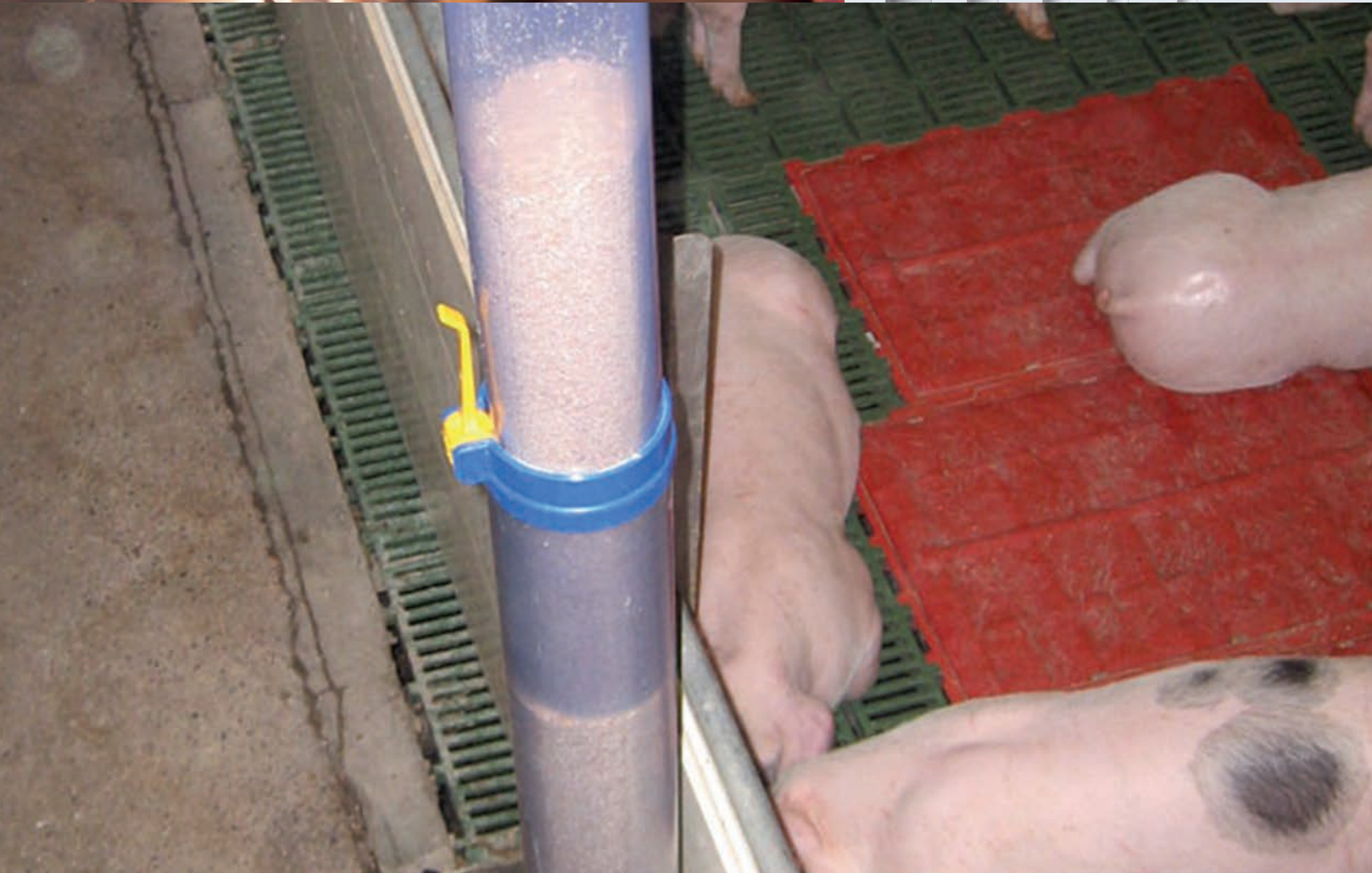


# LUBING

## ACCESSORIES FOR AUGER CONVEYOR

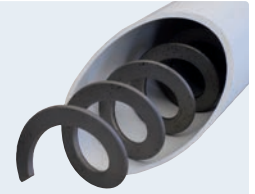


## TUBES AND TUBE BENDS FOR AUGER CONVEYOR

The tubes and bends are simple, reliable and flexible components for auger conveying of feed. Your feed is safely conveyed without any loss in quality to its destination.

### ADVANTAGES

- Universally applicable for any type of house.
- For high conveying capacities.
- Quick and easy assembly.
- High quality plastic (very high impact and UV resistant H-PVC).

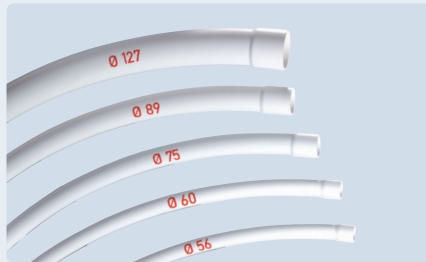


### DESIGN



Tubes for auger conveying with sleeve and clamp slot.

Dimensions	Length	Item No.
56 mm	3055 mm	Art. 6060-04
60 mm	3055 mm	Art. 6064-04
75 mm	3080 mm	Art. 6061-04
89 mm	3095 mm	Art. 6062-04
127 mm	3105 mm	Art. 6063-04



Bends for auger conveying with sleeve and clamp slot.

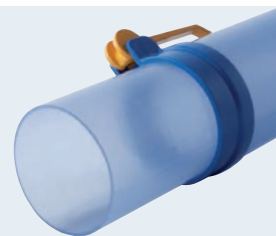
Dimensions	Radius	Angle	Item No.
56 mm	R1500 mm	45°	Art. 6070-04
60 mm	R1530 mm	45°	Art. 6074-04
75 mm	R1533 mm	45°	Art. 6071-04
89 mm	R1568 mm	45°	Art. 6072-04
127 mm	R1700 mm	45°	Art. 6073-04

## TELESCOPIC TUBE

Clamping system with eccentric lever for dry feeding.

### ADVANTAGES

- With the transparent telescopic tube for dry feeding, the feed supply in the tube can be seen quickly and easily at any time.
- The tension lock is designed to avoid unnecessary dust formation.
- The inner diameter on the tube is 77 mm and is therefore compatible with almost all commercially outlets. For mounting on the trough, the outer diameter on the tube is 89 mm.
- The tubes, pushed into each other, are each 1000 mm long. With the stable clamping system, the telescopic tube can be steplessly adjusted to the required length of approx. 1000 - 1800 mm. Simply turn the eccentric lever and adjust the length. Then push the eccentric lever up again, thus the tube is clamped securely.



# LUBING

Further information under  
[WWW.LUBING.COM](http://WWW.LUBING.COM)

**LUBING Maschinenfabrik GmbH & Co. KG**

Lubingstraße 6 · 49406 Barnstorf

☎ +49(0)54 42 - 98 79-0

☎ +49(0)54 42 - 98 79-33

[www.lubing.com](http://www.lubing.com) · [info@lubing.com](mailto:info@lubing.com)

0862-1/22-03 · Subject  
to technical changes.